

SAILING INSTRUCTIONS
Louis Vuitton Cup
America's Cup Challenger Series
(LVC)

July 7 – September 2, 2013

1 Schedule of Races

- 1.1 Races shall be held according to the Louis Vuitton Cup, America's Cup Challenger Series Format agreed on July 2, 2012, with the amended schedule in Appendix A.
- 1.2 In the Round Robin stage, all races of a round shall be completed before the first race of the next round may start.
- 1.3 In the Final stage, a competitor-requested postponement as described in Protocol article 12(d)(v) shall be communicated to ACRM over Channel 8 of the ACRM supplied radios or as a backup VHF channel 88.

2 Crew Weigh In

- 2.1 In accordance with the Measurement Committee Measurement Methodology No.5, crews shall weigh in between 0800 and 1000 on the following designated days:
Saturday, July 6
Monday, July 15
Monday, July 22
Monday, July 29
Monday, August 5
Monday, August 12
Friday, August 16
Friday, August 23
Friday, August 30 (if the LVC Final is not completed prior to this date)
- 2.2 The crew of a Competitor that will not participate in a match of the LVC is not required to weigh in until the scheduled weigh in date prior to the next match in which it will race.
- 2.3 Any replacement crew not weighed on a designated day must be weighed before participating in a race.

3 Haul out Schedule

Each team may haul out at its discretion. This SI is the haul out schedule from the Regatta Director with respect to RRSAC 88.

4 Entry Sides

- 4.1 In the LVC Semi Final stage, the Challenger with the higher combined scores from the LVC Round Robin stage shall choose the entry side for the first race. Competitors shall alternate entry sides in subsequent races.
- 4.2 In the LVC Final:
 - (a) The winner of the Semi-Final stage shall choose the entry side for the first scheduled race. Challengers shall alternate entry sides for the first scheduled race of each day.
 - (b) The other Challenger shall choose the entry side for the second scheduled race. Challengers shall alternate entry sides for the second scheduled race of each day.

5 Marks

- 5.1 All marks will be yellow, toroidal inflatable buoys that are approximately 20 feet in diameter and three feet high, with an 18-foot mast located in the center of the buoy.
- 5.2 The entry line will be between the masts on the marks at each end of the entry line.
- 5.3 The starting line will be between the masts on the marks at each end of the starting line.
- 5.4 The finishing line will be between the masts on the marks at each end of the finishing line.

6 The Course

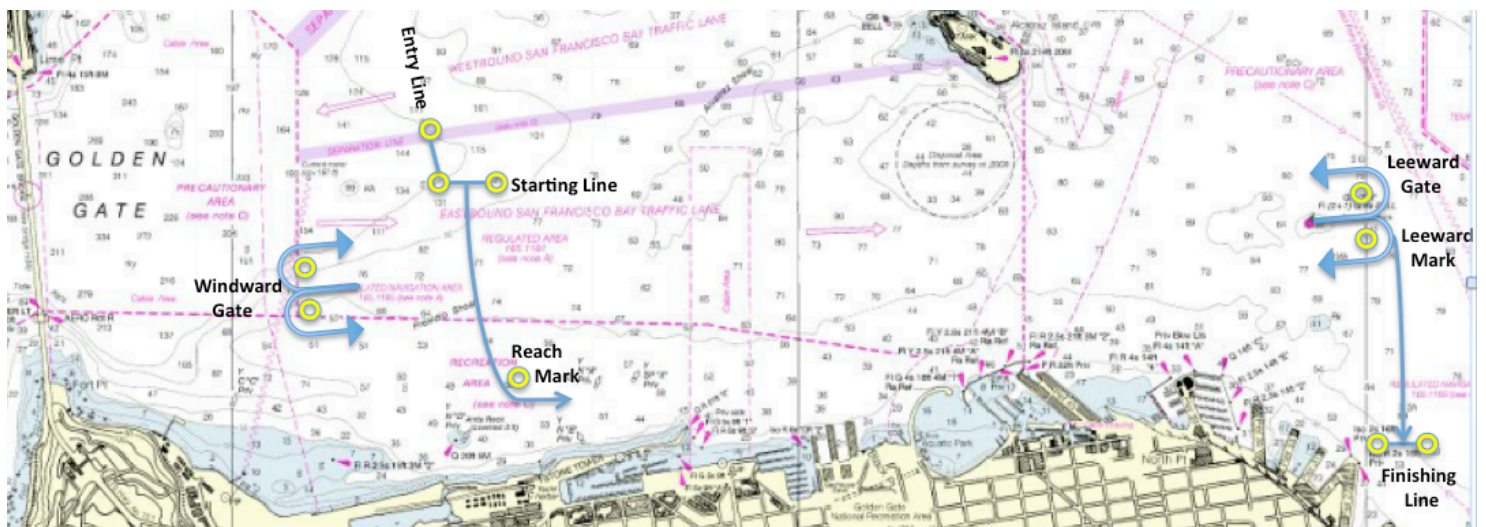
- 6.1 The course for the Round Robin Stage and the Semi Final will be Course 2 as issued by America's Cup Regatta Notice 2011/81.
- 6.2 The course for the Final will be Course 1 or Course 2 as issued by America's Cup Regatta Notice 2011/81.

Course 1:

Start → Reach Mark (to port) → Leeward Gate → Windward Gate → Leeward Mark (to starboard) → Finish

Course 2:

Start → Reach Mark (to port) → Leeward Gate → Windward Gate → Leeward Gate → Windward Gate → Leeward Mark (to starboard) → Finish



7 TIME LIMIT

- 7.1 The time limit for Course 1 is 40 minutes.
- 7.2 The time limit for Course 2 is 70 minutes.

SAILING INSTRUCTIONS

Louis Vuitton Cup

America's Cup Challenger Series

Appendix A. LVC Schedule

Saturday	Sunday	Monday	Tuesday	Wednesday	Thursday	Friday
6 July	7 July	8 July	9 July	10 July	11 July	12 July
	LVC Round Robin 1	Reserve Day	LVC Round Robin 1	Reserve Day	LVC Round Robin 1	Reserve Day
	1215 ETNZ vs LR		1215 ART vs ETNZ		1215 LR vs ART	
13 July	14 July	15 July	16 July	17 July	18 July	19 July
LVC Round Robin 2	LVC Round Robin 2	Reserve Day	LVC Round Robin 2	Reserve Day	LVC Round Robin 3	Reserve Day
1215 LR vs ETNZ	1215 ETNZ vs ART		1215 ART vs LR		1215 ART vs ETNZ	
20 July	21 July	22 July	23 July	24 July	25 July	26 July
LVC Round Robin 3	LVC Round Robin 3	Reserve Day	LVC Round Robin 4	Reserve Day	LVC Round Robin 4	Reserve Day
1215 LR vs ART	1215 ETNZ vs LR		1215 LR vs ETNZ		1215 ART vs LR	
27 July	28 July	29 July	30 July	31 July	1 August	2 August
LVC Round Robin 4	LVC Round Robin 5	Reserve Day	LVC Round Robin 5	Reserve Day	LVC Round Robin 5	Reserve Day
1215 ETNZ vs ART	1215 ETNZ vs LR		1215 ART vs ETNZ		1215 LR vs ART	
3 August	4 August	5 August	6 August	7 August	8 August	9 August
Reserve Day	Reserve Day	Reserve Day	LVC Semi Final	LVC Semi Final	Reserve Day	LVC Semi Final
			1315 SF - Race 1	1315 SF - Race 2		1315 SF - Race 3
10 August	11 August	12 August	13 August	14 August	15 August	16 August
LVC Semi Final	Reserve Day	LVC Semi Final	LVC Semi Final	Reserve Day	LVC Semi Final	Reserve Day
1315 SF - Race 4		1315 SF - Race 5*	1315 SF - Race 6*		1315 SF - Race 7*	
17 August	18 August	19 August	20 August	21 August	22 August	23 August
LVC Final	LVC Final	Reserve Day		LVC Final	Reserve Day	Reserve Day
1310 Final - Race 1 1410 Final - Race 2	1310 Final - Race 3 1410 Final - Race 4			1310 Final - Race 5 1410 Final - Race 6		
24 August	25 August	26 August	27 August	28 August	29 August	30 August
LVC Final	LVC Final	Reserve Day		LVC Final	Reserve Day	LVC Final
1310 Final - Race 7 1410 Final - Race 8*	1310 Final - Race 9* 1410 Final - Race 10*			1310 Final - Race 11* 1410 Final - Race 12*		1310 Final - Race 13*
31 August	1 September	2 September	3 September	4 September	5 September	6 September
Reserve Day	Reserve Day	Reserve Day				